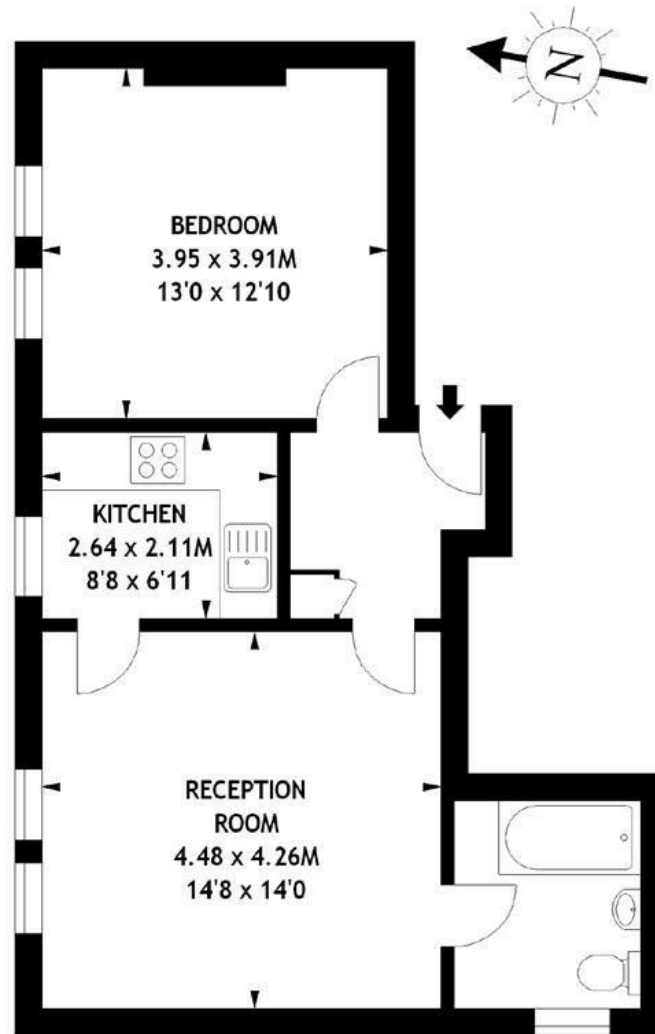


Disraeli Road, Putney, SW15

A spacious and superbly located one bedroom flat on the first floor of this converted period house in central Putney. Offered on an unfurnished basis and located less than a minute from the high street, the accommodation comprises an entrance hallway, bright reception room, fitted kitchen, large double bedroom and bathroom with shower over the bath. This superb flat is perfectly located for all the amenities and transport Putney has to offer. Available late July 2026.

Disraeli Road, SW15

Approximate Internal Floor (Living) Area*
= 550 sq ft / 51.10 sq m
Approximate Additional Area*
= 0 sq ft / 0 sq m
Total Areas Shown on Plan
550 sq ft / 51.10 sq m



First Floor

Illustration for identification purposes only, not to scale
All measurements are maximum, and includes wardrobes and window bays where applicable



- PERIOD CONVERSION
- FITTED KITCHEN
- BATHROOM WITH SHOWER
- EPC E
- RECEPTION ROOM
- SPACIOUS DOUBLE BEDROOM
- JUST OFF HIGH STREET
- COUNCIL TAX BAND C

Per Calendar Month
£1,750 Per Calendar Month



DISCLAIMER•These particulars are intended to give a fair and substantially correct overall description for the guidance of intending purchasers and do not constitute an offer or part of a contract. Prospective purchasers and/or lessees ought to seek their own professional advice.
•All descriptions, dimensions, areas, references to condition and necessary permissions for use and occupation and other details are given in good faith and are believed to be correct, but any intending purchasers should not rely on them as statements or representations of fact, but must satisfy themselves by inspection or otherwise as to the correctness of each of them.
•All measurements are approximate.

